

# AVERAGE WEEKLY EARNINGS

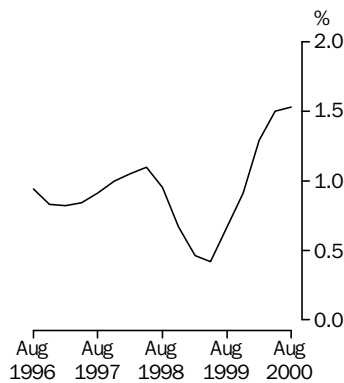
STATES AND  
AUSTRALIA

EMBARGO: 11:30AM (CANBERRA TIME) THURS 16 NOV 2000

## AUGUST 2000 KEY FIGURES

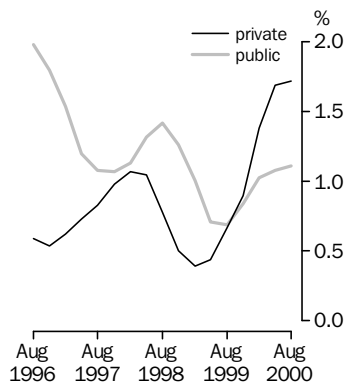
### Full-time adult total earnings

Quarterly % change in trend estimates



### Full-time adult total earnings

Quarterly % change in trend estimates



### TREND ESTIMATES

	Aug 2000 \$	May 2000 to Aug 2000 % change	Aug 1999 to Aug 2000 % change
<b>Australia</b>			
Full-time adult ordinary time earnings	796.60	1.5	5.5
Full-time adult total earnings	836.40	1.5	5.3
All employees total earnings	648.40	2.0	6.3
<b>Private sector</b>			
Full-time adult ordinary time earnings	768.50	1.7	5.9
Full-time adult total earnings	811.50	1.7	5.8
<b>Public sector</b>			
Full-time adult ordinary time earnings	888.70	1.2	4.8
Full-time adult total earnings	917.60	1.1	4.1

### SEASONALLY ADJUSTED ESTIMATES

<b>Australia</b>			
Full-time adult ordinary time earnings	798.30	1.9	6.1
Full-time adult total earnings	838.80	2.0	6.0
All employees total earnings	649.00	2.0	6.8
<b>Private sector</b>			
Full-time adult ordinary time earnings	770.50	2.1	6.6
Full-time adult total earnings	814.10	2.2	6.6
<b>Public sector</b>			
Full-time adult ordinary time earnings	888.90	1.3	4.8
Full-time adult total earnings	918.70	1.3	4.2

## AUGUST 2000 KEY POINTS

### TREND ESTIMATES

- Full-time adult ordinary time earnings for males and females rose by 5.8% and 5.0% respectively in the twelve months to August 2000.
- In the twelve months to August 2000, full-time adult total earnings for males and females rose by 5.3% and 5.4% respectively.
- Full-time adult ordinary time earnings for the private and public sectors rose by 5.9% and 4.8% respectively in the twelve months to August 2000.

**TAKE CARE!**  
For effects of  
compositional change  
see paragraphs 10 & 11  
of the Explanatory Notes.

- For further information about these and related statistics, contact Glynis Orrell on Perth 08 9360 5304 or the National Information Service on 1300 135 070.

# NOTES

## FORTHCOMING ISSUES

REFERENCE PERIOD	EXPECTED RELEASE DATE
November 2000	1 March 2001
February 2001	17 May 2001

## RELATED ISSUES

*Average Weekly Earnings, Australia, Preliminary* (Cat. no. 6301.0)

REFERENCE PERIOD	EXPECTED RELEASE DATE
November 2000	9 February 2001
February 2001	27 April 2001

## NOTES ON ESTIMATES

Movements in average weekly earnings can be affected by both changes in the level of earnings per employee and changes in the composition of the labour force. For example, changes in the proportions of full-time, part-time, casual and junior employees and variations in the distribution of occupations can affect movements in earnings series. Refer to paragraphs 10 and 11 of the Explanatory Notes.

## SAMPLING ERRORS

For information on sampling errors see the Technical Notes at the end of this publication. Standard errors for the original estimates contained in this publication are in tables A, B and C of the Technical Notes.

## SYMBOLS AND OTHER USAGES

ABS	Australian Bureau of Statistics
ANZSIC	Australian and New Zealand Standard Industrial Classification
AWE	Average Weekly Earnings
SEE	Survey of Employment and Earnings

Dennis Trewin  
Australian Statistician

# C O N T E N T S

	page
EDITORIAL	
Notes .....	2
TABLES	
Average Weekly Earnings	
1 Australia: Trend .....	4
2 Australia: Seasonally Adjusted .....	5
3 Australia: Original .....	6
4 Private Sector, Australia: Trend .....	7
5 Private Sector, Australia: Seasonally Adjusted .....	8
6 Private Sector, Australia: Original .....	9
7 Public Sector, Australia: Trend .....	10
8 Public Sector, Australia: Seasonally Adjusted .....	11
9 Public Sector, Australia: Original .....	12
10 Industry, Australia: Original .....	13
11 States and Territories: Trend .....	14
12 States and Territories: Seasonally Adjusted .....	16
13 States and Territories: Original .....	18
14 Quarterly Percentage Change, States and Territories: Trend .....	20
15 Quarterly Percentage Change, States and Territories: Seasonally Adjusted .	21
16 Quarterly Percentage Change, States and Territories: Original .....	22
17 Annual Percentage Change, States and Territories: Trend .....	23
ADDITIONAL INFORMATION	
Explanatory notes .....	24
Technical notes .....	28
Special data service .....	32
Glossary .....	33



AVERAGE WEEKLY EARNINGS, Australia: **Trend**

Reference period	MALES.....			FEMALES.....			PERSONS.....		
	Full-time adult ordinary time earnings	Full-time adult total earnings	All males total earnings	Full-time adult ordinary time earnings	Full-time adult total earnings	All females total earnings	Full-time adult ordinary time earnings	Full-time adult total earnings	All employees total earnings
DOLLARS									
<b>1999</b>									
May	794.60	849.10	729.60	671.10	685.60	480.60	749.00	788.80	608.30
August	800.60	854.30	733.40	676.50	690.80	481.50	754.80	794.00	609.90
November	810.00	862.90	738.90	682.60	696.70	484.70	762.70	801.30	613.70
<b>2000</b>									
February	822.30	874.70	748.50	690.50	705.20	493.00	773.30	811.70	623.20
May	835.10	887.40	759.90	699.90	715.90	504.10	785.00	823.80	635.60
August	846.80	899.10	771.00	710.20	728.00	515.60	796.60	836.40	648.40
PERCENTAGE CHANGE (from previous quarter)									
<b>1999</b>									
May	0.4	0.3	0.4	0.7	0.8	0.2	0.5	0.4	0.2
August	0.8	0.6	0.5	0.8	0.8	0.2	0.8	0.7	0.3
November	1.2	1.0	0.7	0.9	0.9	0.7	1.0	0.9	0.6
<b>2000</b>									
February	1.5	1.4	1.3	1.2	1.2	1.7	1.4	1.3	1.5
May	1.6	1.5	1.5	1.4	1.5	2.2	1.5	1.5	2.0
August	1.4	1.3	1.5	1.5	1.7	2.3	1.5	1.5	2.0
PERCENTAGE CHANGE (from corresponding quarter of previous year)									
<b>1998</b>									
August	4.1	4.1	3.3	4.4	4.2	2.4	4.2	4.2	2.8
<b>1999</b>									
August	2.3	1.8	1.8	3.4	3.4	1.7	2.6	2.2	1.3
<b>2000</b>									
August	5.8	5.3	5.1	5.0	5.4	7.1	5.5	5.3	6.3

AVERAGE WEEKLY EARNINGS, Australia: **Seasonally Adjusted**

Reference period	MALES.....			FEMALES.....			PERSONS.....		
	Full-time adult ordinary time earnings	Full-time adult total earnings	All males total earnings	Full-time adult ordinary time earnings	Full-time adult total earnings	All females total earnings	Full-time adult ordinary time earnings	Full-time adult total earnings	All employees total earnings
DOLLARS									
<b>1999</b>									
May	799.40	854.30	735.10	670.20	684.40	483.70	751.40	791.00	612.70
August	795.60	848.60	729.20	676.90	691.80	480.70	752.20	791.50	607.60
November	810.70	864.50	739.50	682.90	697.40	483.20	763.30	802.40	613.00
<b>2000</b>									
February	823.80	875.70	748.00	689.90	702.90	491.70	773.90	811.40	622.00
May	833.90	885.90	760.00	698.60	715.60	505.50	783.40	822.00	636.50
August	847.60	900.50	771.80	712.20	730.10	515.60	798.30	838.80	649.00
PERCENTAGE CHANGE (from previous quarter)									
<b>1999</b>									
May	1.4	1.3	1.5	0.5	0.6	1.2	1.0	0.9	1.3
August	-0.5	-0.7	-0.8	1.0	1.1	-0.6	0.1	0.1	-0.8
November	1.9	1.9	1.4	0.9	0.8	0.5	1.5	1.4	0.9
<b>2000</b>									
February	1.6	1.3	1.1	1.0	0.8	1.8	1.4	1.1	1.5
May	1.2	1.2	1.6	1.3	1.8	2.8	1.2	1.3	2.3
August	1.6	1.6	1.5	2.0	2.0	2.0	1.9	2.0	2.0
PERCENTAGE CHANGE (from corresponding quarter of previous year)									
<b>1998</b>									
August	4.0	3.9	4.0	4.2	3.9	3.0	4.1	4.0	3.6
<b>1999</b>									
August	1.5	0.9	0.7	3.5	3.6	1.2	2.1	1.7	0.4
<b>2000</b>									
August	6.5	6.1	5.8	5.2	5.5	7.3	6.1	6.0	6.8

AVERAGE WEEKLY EARNINGS, Australia: **Original**

Reference period	MALES.....			FEMALES.....			PERSONS.....		
	Full-time adult ordinary time earnings	Full-time adult total earnings	All males total earnings	Full-time adult ordinary time earnings	Full-time adult total earnings	All females total earnings	Full-time adult ordinary time earnings	Full-time adult total earnings	All employees total earnings
DOLLARS									
<b>1999</b>									
May	798.40	853.40	733.00	669.60	683.50	483.00	750.80	790.60	611.10
August	796.20	847.30	727.10	675.70	690.30	479.30	751.80	789.50	605.40
November	810.40	867.80	741.10	683.40	698.80	482.50	763.20	805.00	613.30
<b>2000</b>									
February	824.50	874.50	750.80	691.40	704.10	494.60	775.00	811.20	625.50
May	832.80	884.90	757.70	697.90	714.50	504.80	782.60	821.50	634.70
August	848.30	899.30	769.60	710.90	728.50	514.10	798.10	836.80	646.80
PERCENTAGE CHANGE (from previous quarter)									
<b>1999</b>									
May	1.2	1.3	0.8	0.2	0.3	0.5	0.8	0.9	0.4
August	-0.3	-0.7	-0.8	0.9	1.0	-0.8	0.1	-0.1	-0.9
November	1.8	2.4	1.9	1.1	1.2	0.7	1.5	2.0	1.3
<b>2000</b>									
February	1.7	0.8	1.3	1.2	0.8	2.5	1.5	0.8	2.0
May	1.0	1.2	0.9	0.9	1.5	2.1	1.0	1.3	1.5
August	1.9	1.6	1.6	1.9	2.0	1.8	2.0	1.9	1.9
PERCENTAGE CHANGE (from corresponding quarter of previous year)									
<b>1998</b>									
August	4.1	3.9	4.0	4.2	3.9	3.0	4.2	4.0	3.6
<b>1999</b>									
August	1.5	0.9	0.7	3.5	3.6	1.2	2.1	1.7	0.4
<b>2000</b>									
August	6.6	6.1	5.8	5.2	5.5	7.3	6.2	6.0	6.8



AVERAGE WEEKLY EARNINGS, Private Sector—Australia: **Trend**

Reference period	MALES.....			FEMALES.....			PERSONS.....		
	Full-time adult ordinary time earnings	Full-time adult total earnings	All males total earnings	Full-time adult ordinary time earnings	Full-time adult total earnings	All females total earnings	Full-time adult ordinary time earnings	Full-time adult total earnings	All employees total earnings
DOLLARS									
<b>1999</b>									
May	770.20	826.00	696.80	626.70	641.70	433.40	720.20	761.90	571.40
August	776.00	830.80	700.60	631.80	646.40	433.60	726.00	767.00	572.60
November	783.90	838.60	704.80	637.80	652.40	436.50	733.20	773.90	575.60
<b>2000</b>									
February	795.50	850.30	714.00	646.30	661.80	445.10	743.60	784.60	585.40
May	809.10	863.90	726.40	656.20	673.60	456.70	756.00	797.80	599.20
August	822.00	876.60	739.10	666.70	686.40	468.20	768.50	811.50	613.50
PERCENTAGE CHANGE (from previous quarter)									
<b>1999</b>									
May	0.5	0.3	0.6	0.8	0.8	0.3	0.6	0.4	0.4
August	0.8	0.6	0.5	0.8	0.7	0.0	0.8	0.7	0.2
November	1.0	0.9	0.6	1.0	0.9	0.7	1.0	0.9	0.5
<b>2000</b>									
February	1.5	1.4	1.3	1.3	1.4	2.0	1.4	1.4	1.7
May	1.7	1.6	1.7	1.5	1.8	2.6	1.7	1.7	2.4
August	1.6	1.5	1.7	1.6	1.9	2.5	1.7	1.7	2.4
PERCENTAGE CHANGE (from corresponding quarter of previous year)									
<b>1998</b>									
August	3.9	3.8	3.0	4.4	4.1	1.8	4.1	3.9	2.3
<b>1999</b>									
August	2.2	1.5	1.8	3.3	3.3	1.9	2.5	2.0	1.4
<b>2000</b>									
August	5.9	5.5	5.5	5.5	6.2	8.0	5.9	5.8	7.1

AVERAGE WEEKLY EARNINGS, Private Sector—Australia: **Seasonally Adjusted**

Reference period	MALES.....			FEMALES.....			PERSONS.....		
	Full-time adult ordinary time earnings	Full-time adult total earnings	All males total earnings	Full-time adult ordinary time earnings	Full-time adult total earnings	All females total earnings	Full-time adult ordinary time earnings	Full-time adult total earnings	All employees total earnings
DOLLARS									
<b>1999</b>									
May	777.40	833.40	703.40	627.30	641.90	438.30	724.30	765.80	577.40
August	770.90	824.60	696.90	631.80	647.00	431.70	723.00	764.00	570.00
November	785.00	840.20	705.10	636.90	651.70	434.60	733.80	774.80	574.30
<b>2000</b>									
February	795.10	850.10	712.30	646.80	660.80	443.80	743.60	784.00	583.50
May	809.00	863.40	727.00	654.80	673.20	459.10	754.60	796.20	600.90
August	822.90	877.80	740.20	668.20	687.90	467.30	770.50	814.10	613.90
PERCENTAGE CHANGE (from previous quarter)									
<b>1999</b>									
May	2.1	1.8	1.9	0.9	0.8	2.0	1.5	1.3	1.8
August	-0.8	-1.1	-0.9	0.7	0.8	-1.5	-0.2	-0.2	-1.3
November	1.8	1.9	1.2	0.8	0.7	0.7	1.5	1.4	0.8
<b>2000</b>									
February	1.3	1.2	1.0	1.6	1.4	2.1	1.3	1.2	1.6
May	1.8	1.6	2.1	1.2	1.9	3.4	1.5	1.6	3.0
August	1.7	1.7	1.8	2.0	2.2	1.8	2.1	2.2	2.2
PERCENTAGE CHANGE (from corresponding quarter of previous year)									
<b>1998</b>									
August	4.0	3.7	4.1	4.1	3.8	2.2	4.1	3.8	3.3
<b>1999</b>									
August	1.2	0.4	0.6	3.3	3.5	1.3	1.8	1.3	0.3
<b>2000</b>									
August	6.8	6.5	6.2	5.8	6.3	8.3	6.6	6.6	7.7

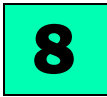


AVERAGE WEEKLY EARNINGS, Private Sector—Australia: **Original**

Reference period	MALES.....			FEMALES.....			PERSONS.....		
	Full-time adult ordinary time earnings	Full-time adult total earnings	All males total earnings	Full-time adult ordinary time earnings	Full-time adult total earnings	All females total earnings	Full-time adult ordinary time earnings	Full-time adult total earnings	All employees total earnings
DOLLARS									
<b>1999</b>									
May	775.30	831.00	700.90	625.70	639.80	437.10	723.20	764.40	575.20
August	771.50	823.70	694.60	631.20	646.10	431.80	723.20	762.60	568.70
November	784.60	844.20	707.80	638.40	654.90	434.10	733.50	778.00	575.40
<b>2000</b>									
February	796.90	849.40	714.50	647.60	660.70	445.60	744.80	783.60	586.00
May	806.70	860.70	724.40	653.20	671.00	457.80	753.30	794.70	598.60
August	823.80	877.00	737.70	667.50	687.00	467.40	770.90	812.70	612.50
PERCENTAGE CHANGE (from previous quarter)									
<b>1999</b>									
May	1.6	1.6	1.3	0.5	0.5	1.3	1.2	1.2	1.0
August	-0.5	-0.9	-0.9	0.9	1.0	-1.2	0.0	-0.2	-1.1
November	1.7	2.5	1.9	1.1	1.4	0.5	1.4	2.0	1.2
<b>2000</b>									
February	1.6	0.6	1.0	1.4	0.9	2.6	1.5	0.7	1.9
May	1.2	1.3	1.4	0.9	1.6	2.7	1.1	1.4	2.1
August	2.1	1.9	1.8	2.2	2.4	2.1	2.3	2.3	2.3
PERCENTAGE CHANGE (from corresponding quarter of previous year)									
<b>1998</b>									
August	4.0	3.7	4.1	4.1	3.8	2.1	4.1	3.8	3.2
<b>1999</b>									
August	1.2	0.4	0.6	3.3	3.5	1.2	1.9	1.3	0.3
<b>2000</b>									
August	6.8	6.5	6.2	5.8	6.3	8.2	6.6	6.6	7.7

AVERAGE WEEKLY EARNINGS, Public Sector—Australia: **Trend**

Reference period	MALES.....			FEMALES.....			PERSONS.....		
	Full-time adult ordinary time earnings	Full-time adult total earnings	All males total earnings	Full-time adult ordinary time earnings	Full-time adult total earnings	All females total earnings	Full-time adult ordinary time earnings	Full-time adult total earnings	All employees total earnings
DOLLARS									
<b>1999</b>									
May	886.30	935.90	869.20	784.20	797.40	643.50	841.60	875.30	749.90
August	894.10	943.40	876.10	789.90	803.10	648.00	848.10	881.40	754.40
November	906.60	953.60	886.20	794.70	807.70	652.80	857.00	888.70	761.10
<b>2000</b>									
February	921.20	965.50	897.20	800.90	813.70	657.10	867.60	897.90	768.20
May	934.60	977.30	906.80	808.70	821.30	661.90	878.20	907.60	774.70
August	946.90	989.10	915.30	817.70	830.30	667.70	888.70	917.60	780.80
PERCENTAGE CHANGE (from previous quarter)									
<b>1999</b>									
May	0.6	0.6	0.5	1.0	1.0	0.4	0.7	0.7	0.3
August	0.9	0.8	0.8	0.7	0.7	0.7	0.8	0.7	0.6
November	1.4	1.1	1.2	0.6	0.6	0.7	1.0	0.8	0.9
<b>2000</b>									
February	1.6	1.2	1.2	0.8	0.7	0.7	1.2	1.0	0.9
May	1.5	1.2	1.1	1.0	0.9	0.7	1.2	1.1	0.8
August	1.3	1.2	0.9	1.1	1.1	0.9	1.2	1.1	0.8
PERCENTAGE CHANGE (from corresponding quarter of previous year)									
<b>1998</b>									
August	5.1	5.1	4.9	4.8	4.8	5.7	5.0	5.0	5.3
<b>1999</b>									
August	3.7	3.6	3.0	4.4	4.4	2.6	3.9	3.7	2.3
<b>2000</b>									
August	5.9	4.8	4.5	3.5	3.4	3.0	4.8	4.1	3.5



AVERAGE WEEKLY EARNINGS, Public Sector—Australia: **Seasonally Adjusted**

Reference period	MALES.....			FEMALES.....			PERSONS.....		
	Full-time adult ordinary time earnings	Full-time adult total earnings	All males total earnings	Full-time adult ordinary time earnings	Full-time adult total earnings	All females total earnings	Full-time adult ordinary time earnings	Full-time adult total earnings	All employees total earnings
DOLLARS									
<b>1999</b>									
May	885.40	935.10	869.60	782.30	795.00	640.70	840.40	873.90	749.00
August	893.60	942.70	873.80	791.30	804.70	650.20	848.20	881.40	753.90
November	902.90	952.20	885.00	796.00	809.20	653.00	855.60	888.50	760.80
<b>2000</b>									
February	927.10	968.70	902.10	797.30	809.80	656.60	869.20	898.30	770.20
May	932.20	974.40	903.40	809.70	822.60	660.50	877.40	906.50	772.90
August	946.40	990.50	915.90	819.00	831.50	669.40	888.90	918.70	781.50
PERCENTAGE CHANGE (from previous quarter)									
<b>1999</b>									
May	0.3	0.4	0.5	0.6	0.5	0.1	0.4	0.3	0.2
August	0.9	0.8	0.5	1.2	1.2	1.5	0.9	0.9	0.6
November	1.0	1.0	1.3	0.6	0.5	0.4	0.9	0.8	0.9
<b>2000</b>									
February	2.7	1.7	1.9	0.2	0.1	0.5	1.6	1.1	1.2
May	0.5	0.6	0.1	1.6	1.6	0.6	1.0	0.9	0.3
August	1.5	1.6	1.4	1.1	1.1	1.3	1.3	1.3	1.1
PERCENTAGE CHANGE (from corresponding quarter of previous year)									
<b>1998</b>									
August	4.7	4.8	4.5	4.7	4.7	6.2	4.7	4.8	5.3
<b>1999</b>									
August	3.7	3.5	2.8	4.6	4.7	2.6	3.9	3.8	2.1
<b>2000</b>									
August	5.9	5.1	4.8	3.5	3.3	2.9	4.8	4.2	3.7

AVERAGE WEEKLY EARNINGS, Public Sector—Australia: **Original**

Reference period	MALES.....			FEMALES.....			PERSONS.....		
	Full-time adult ordinary time earnings	Full-time adult total earnings	All males total earnings	Full-time adult ordinary time earnings	Full-time adult total earnings	All females total earnings	Full-time adult ordinary time earnings	Full-time adult total earnings	All employees total earnings
DOLLARS									
<b>1999</b>									
May	885.20	937.50	869.70	782.10	795.60	641.30	840.00	875.20	748.60
August	891.50	938.60	869.50	788.40	802.20	643.30	845.60	877.90	747.80
November	905.60	954.90	882.40	795.80	808.60	650.10	857.20	890.30	758.40
<b>2000</b>									
February	926.90	967.80	909.30	800.70	812.30	665.90	870.90	898.80	779.50
May	931.80	976.80	903.40	809.40	822.90	661.10	876.80	907.70	772.40
August	944.20	986.20	911.40	816.10	829.10	662.30	886.20	915.10	775.10
PERCENTAGE CHANGE (from previous quarter)									
<b>1999</b>									
May	0.3	0.8	-0.3	0.1	0.2	-1.2	0.2	0.5	-1.0
August	0.7	0.1	0.0	0.8	0.8	0.3	0.7	0.3	-0.1
November	1.6	1.7	1.5	0.9	0.8	1.1	1.4	1.4	1.4
<b>2000</b>									
February	2.4	1.4	3.1	0.6	0.5	2.4	1.6	1.0	2.8
May	0.5	0.9	-0.7	1.1	1.3	-0.7	0.7	1.0	-0.9
August	1.3	1.0	0.9	0.8	0.7	0.2	1.1	0.8	0.4
PERCENTAGE CHANGE (from corresponding quarter of previous year)									
<b>1998</b>									
August	4.7	4.9	4.5	4.7	4.7	6.3	4.7	4.8	5.4
<b>1999</b>									
August	3.8	3.5	2.8	4.6	4.7	2.6	3.9	3.8	2.1
<b>2000</b>									
August	5.9	5.1	4.8	3.5	3.4	2.9	4.8	4.2	3.7

AVERAGE WEEKLY EARNINGS, Industry—Australia: **Original**

Industry	MALES.....			FEMALES.....			PERSONS.....		
	<i>Full-time adult ordinary time earnings</i>	<i>Full-time adult total earnings</i>	<i>All males total earnings</i>	<i>Full-time adult ordinary time earnings</i>	<i>Full-time adult total earnings</i>	<i>All females total earnings</i>	<i>Full-time adult ordinary time earnings</i>	<i>Full-time adult total earnings</i>	<i>All employees total earnings</i>
DOLLARS									
Mining	1 345.10	1 444.40	1 412.90	977.10	988.30	899.10	1 309.90	1 400.70	1 356.90
Manufacturing	749.30	832.80	787.70	632.10	667.40	584.30	723.90	797.00	737.30
Electricity, gas and water supply	997.40	1 081.50	1 069.30	840.30	861.90	778.20	973.00	1 047.40	1 015.30
Construction	774.40	848.50	804.50	593.20	601.00	489.80	745.60	809.20	738.90
Wholesale trade	821.10	852.90	792.50	662.20	673.50	566.20	777.30	803.40	720.60
Retail trade	644.40	675.40	473.50	564.30	584.70	326.20	615.30	642.40	398.10
Accommodation, cafes and restaurants	630.50	647.50	455.90	572.00	578.60	331.00	609.80	623.10	391.20
Transport and storage	844.80	928.80	862.00	699.30	724.50	600.60	813.30	884.50	794.80
Communication services	967.00	1 008.90	968.50	816.20	832.40	723.90	922.40	956.70	884.20
Finance and insurance	1 187.80	1 215.50	1 146.80	724.00	760.50	620.40	941.10	973.50	824.60
Property and business services	950.50	993.40	843.70	702.60	715.90	551.50	849.30	880.10	705.10
Government administration and defence	901.80	929.00	887.70	782.90	795.60	662.70	853.60	874.90	780.50
Education	965.90	972.20	787.80	843.90	845.90	598.90	893.20	896.90	660.00
Health and community services	964.30	1 006.40	839.90	759.00	777.80	540.00	824.80	851.00	599.60
Cultural and recreational services	877.10	894.30	539.90	723.50	735.10	376.90	814.60	829.60	456.30
Personal and other services	858.80	903.10	789.70	694.20	712.90	478.10	804.20	840.00	637.70
<b>All industries</b>	<b>848.30</b>	<b>899.30</b>	<b>769.60</b>	<b>710.90</b>	<b>728.50</b>	<b>514.10</b>	<b>798.10</b>	<b>836.80</b>	<b>646.80</b>

## PERCENTAGE CHANGE (from corresponding quarter of previous year)

Mining	12.2	11.4	11.1	10.8	9.1	6.5	12.1	11.1	10.5
Manufacturing	2.3	2.1	2.1	0.1	0.8	4.5	1.8	1.8	3.0
Electricity, gas and water supply	11.4	9.7	9.7	6.8	6.5	8.3	10.5	8.9	8.9
Construction	3.2	3.5	3.9	6.6	6.4	6.2	2.7	2.8	2.4
Wholesale trade	8.3	8.5	8.5	2.5	2.0	9.9	6.4	6.4	8.8
Retail trade	5.8	5.1	1.9	7.6	8.2	7.8	6.7	6.4	5.5
Accommodation, cafes and restaurants	4.9	4.6	7.7	6.0	5.8	13.7	5.4	5.2	12.7
Transport and storage	3.8	4.1	6.3	4.6	4.2	3.9	4.6	4.9	6.6
Communication services	15.4	9.6	10.3	9.4	7.4	7.4	14.0	9.4	10.1
Finance and insurance	1.2	2.7	1.3	2.1	4.9	6.1	1.6	3.6	4.5
Property and business services	11.2	9.6	10.2	10.6	10.4	11.2	10.9	9.8	10.5
Government administration and defence	5.0	5.0	5.1	2.7	2.8	3.3	3.9	3.9	4.0
Education	3.2	3.2	2.1	2.5	2.5	2.1	2.9	2.9	2.2
Health and community services	7.8	8.0	11.9	5.6	6.1	4.3	6.6	7.0	5.6
Cultural and recreational services	14.2	13.4	9.1	8.6	8.1	-10.2	13.2	12.5	0.3
Personal and other services	8.0	8.4	8.7	9.8	10.5	14.8	9.3	9.8	15.4
<b>All industries</b>	<b>6.6</b>	<b>6.1</b>	<b>5.8</b>	<b>5.2</b>	<b>5.5</b>	<b>7.3</b>	<b>6.2</b>	<b>6.0</b>	<b>6.8</b>

AVERAGE WEEKLY EARNINGS, States and Territories: **Trend**

Reference period	MALES.....			FEMALES.....			PERSONS.....		
	Full-time adult ordinary time earnings	Full-time adult total earnings	All males total earnings	Full-time adult ordinary time earnings	Full-time adult total earnings	All females total earnings	Full-time adult ordinary time earnings	Full-time adult total earnings	All employees total earnings
NEW SOUTH WALES									
<b>1999</b>									
May	837.90	897.30	767.60	705.20	719.90	505.90	788.50	831.20	638.70
August	846.00	905.90	775.60	707.60	722.30	506.30	794.20	837.10	642.70
November	857.70	916.90	784.70	710.10	725.10	512.10	802.10	844.60	650.70
<b>2000</b>									
February	872.90	930.50	795.50	715.30	731.60	524.40	813.10	855.10	663.20
May	887.60	944.20	806.30	721.90	740.50	536.80	824.50	866.60	676.00
August	900.00	956.40	816.80	728.70	749.80	547.70	834.70	877.40	687.90
VICTORIA									
<b>1999</b>									
May	775.30	829.30	714.50	669.80	684.90	483.10	737.20	776.90	604.40
August	778.10	829.80	716.70	682.40	697.60	488.70	743.40	781.80	607.30
November	783.10	833.30	720.50	692.00	707.10	490.40	750.00	788.00	609.00
<b>2000</b>									
February	791.50	842.10	729.20	699.50	714.90	493.70	758.50	796.60	615.00
May	802.70	854.00	741.00	708.90	724.80	502.80	769.60	807.70	625.80
August	814.80	866.50	752.10	721.10	738.10	514.20	782.40	819.80	637.50
QUEENSLAND									
<b>1999</b>									
May	745.50	794.20	702.10	628.10	638.30	464.50	701.70	735.70	587.10
August	749.70	797.90	698.80	629.50	639.20	462.90	704.80	738.80	584.50
November	752.70	800.30	692.60	633.30	643.70	464.80	708.30	742.40	583.80
<b>2000</b>									
February	761.20	810.70	697.10	642.40	653.60	472.30	717.50	752.80	590.90
May	774.60	827.20	709.80	655.20	666.70	483.90	731.10	768.20	603.40
August	790.40	846.30	725.30	669.60	681.00	497.00	747.10	786.40	617.70
SOUTH AUSTRALIA									
<b>1999</b>									
May	740.70	796.50	677.30	629.00	653.20	458.10	699.90	743.80	570.10
August	742.70	796.50	683.60	632.00	655.70	453.80	702.10	744.80	569.00
November	750.50	804.50	693.10	636.80	657.40	453.50	708.50	750.50	572.60
<b>2000</b>									
February	762.30	818.00	702.30	644.30	663.60	458.90	718.80	761.20	580.10
May	775.30	833.60	711.10	654.40	676.10	468.00	730.80	775.30	589.70
August	787.30	848.10	719.00	667.00	693.40	479.30	743.50	790.90	599.70

Reference period	MALES.....			FEMALES.....			PERSONS.....		
	Full-time adult ordinary time earnings	Full-time adult total earnings	All males total earnings	Full-time adult ordinary time earnings	Full-time adult total earnings	All females total earnings	Full-time adult ordinary time earnings	Full-time adult total earnings	All employees total earnings
WESTERN AUSTRALIA									
<b>1999</b>									
May	814.50	871.40	727.70	640.30	652.70	420.70	752.60	793.70	573.60
August	827.60	883.20	735.50	644.40	656.60	422.20	762.50	802.60	576.90
November	843.60	897.30	746.10	653.70	665.00	425.30	775.20	813.70	581.40
<b>2000</b>									
February	857.50	908.50	757.40	666.70	677.10	433.40	788.40	824.80	591.00
May	870.70	918.30	767.90	677.80	688.10	443.40	801.60	835.80	603.60
August	880.70	925.70	777.20	686.30	697.00	453.10	812.60	845.70	616.10
TASMANIA									
<b>1999</b>									
May	743.00	784.20	671.10	618.80	630.90	420.60	700.80	732.30	545.30
August	748.10	784.60	670.40	625.10	638.10	427.30	705.80	734.10	547.10
November	757.70	792.00	675.30	632.60	647.50	432.90	713.80	741.30	551.90
<b>2000</b>									
February	770.40	805.60	683.20	639.10	655.50	434.90	724.20	752.90	557.40
May	782.50	818.50	688.70	645.00	661.90	432.30	734.90	764.30	558.80
August	793.90	831.80	694.40	650.30	667.10	426.80	745.30	775.90	557.60
NORTHERN TERRITORY									
<b>1999</b>									
May	803.80	855.10	673.40	703.00	718.70	529.60	758.80	794.50	606.60
August	814.20	865.10	685.20	706.80	723.50	522.20	767.40	803.40	607.60
November	826.60	875.70	704.20	711.40	729.10	527.70	777.50	813.40	619.10
<b>2000</b>									
February	838.00	884.80	723.20	717.20	735.90	542.70	786.80	822.00	635.30
May	849.80	894.10	741.00	723.10	742.40	557.60	796.00	829.60	651.60
August	861.50	903.90	756.40	728.20	747.60	569.00	805.10	836.90	665.10
AUSTRALIAN CAPITAL TERRITORY									
<b>1999</b>									
May	887.50	922.90	792.90	781.10	792.10	568.80	843.30	869.70	679.70
August	908.60	939.10	805.60	794.40	805.20	572.00	861.10	882.70	684.20
November	939.60	964.60	834.90	807.90	818.20	590.70	883.10	901.20	705.20
<b>2000</b>									
February	965.20	987.60	863.80	818.20	827.50	611.00	899.50	916.90	728.00
May	980.60	1 002.90	883.10	826.20	834.20	624.90	909.90	926.80	743.60
August	987.50	1 011.20	894.00	832.70	839.70	632.70	916.80	931.80	752.30

AVERAGE WEEKLY EARNINGS, States and Territories: **Seasonally Adjusted**

Reference period	MALES.....			FEMALES.....			PERSONS.....		
	Full-time adult ordinary time earnings	Full-time adult total earnings	All males total earnings	Full-time adult ordinary time earnings	Full-time adult total earnings	All females total earnings	Full-time adult ordinary time earnings	Full-time adult total earnings	All employees total earnings
NEW SOUTH WALES									
<b>1999</b>									
May	842.90	902.80	769.20	706.70	721.90	510.30	792.00	834.80	641.60
August	838.30	898.60	771.30	705.10	719.60	499.40	788.30	831.30	635.90
November	861.10	919.60	786.70	710.90	726.50	510.90	805.10	847.50	652.90
<b>2000</b>									
February	871.80	931.80	797.60	714.70	729.40	528.90	811.60	854.70	665.10
May	889.70	942.50	802.40	721.30	740.60	534.70	825.40	865.10	673.10
August	898.80	957.70	819.70	729.90	751.40	547.90	834.90	879.40	690.00
VICTORIA									
<b>1999</b>									
May	780.60	835.00	723.10	665.30	678.40	487.70	739.00	778.90	610.90
August	777.30	828.10	713.70	687.20	703.90	491.50	745.20	781.60	607.50
November	778.60	829.10	719.10	693.50	708.70	492.20	746.40	787.50	608.60
<b>2000</b>									
February	797.40	846.40	726.50	697.50	712.00	484.90	762.10	797.10	609.40
May	796.60	850.20	745.60	705.20	721.30	506.20	764.40	805.10	629.60
August	818.30	868.80	749.90	726.10	743.50	516.90	786.10	822.70	638.30
QUEENSLAND									
<b>1999</b>									
May	750.30	802.10	711.30	627.30	637.90	465.90	704.10	739.40	592.90
August	744.10	792.30	697.00	633.80	642.80	468.10	703.10	737.20	584.60
November	756.70	801.70	687.70	626.20	637.10	457.10	707.60	741.00	578.60
<b>2000</b>									
February	760.70	811.30	698.60	646.70	657.80	473.00	719.40	755.20	592.00
May	766.90	819.50	704.40	651.20	663.40	486.10	724.30	760.90	602.30
August	799.10	854.70	732.00	672.80	683.60	495.50	753.70	793.40	619.50
SOUTH AUSTRALIA									
<b>1999</b>									
May	743.70	799.10	682.30	625.20	648.50	456.10	700.30	743.40	572.50
August	740.60	794.70	672.10	634.30	661.00	453.30	702.10	745.80	563.30
November	747.70	802.50	702.20	638.10	660.60	453.90	705.60	749.60	575.60
<b>2000</b>									
February	766.80	819.20	705.00	642.10	653.40	460.20	722.30	759.40	582.70
May	772.10	833.70	700.80	652.00	677.80	461.40	727.50	775.20	582.20
August	789.20	848.90	727.80	671.10	698.40	486.40	745.50	792.80	606.70



Reference period	MALES.....			FEMALES.....			PERSONS.....		
	Full-time adult ordinary time earnings	Full-time adult total earnings	All males total earnings	Full-time adult ordinary time earnings	Full-time adult total earnings	All females total earnings	Full-time adult ordinary time earnings	Full-time adult total earnings	All employees total earnings
<b>WESTERN AUSTRALIA</b>									
<b>1999</b>									
May	824.60	876.60	729.50	642.90	654.40	418.40	759.80	797.20	574.00
August	827.60	884.70	734.50	635.50	649.50	423.70	759.80	801.50	578.20
November	839.40	894.50	745.00	659.10	669.70	426.40	774.40	813.30	581.20
<b>2000</b>									
February	857.70	908.60	760.80	665.10	675.20	426.60	788.30	825.10	586.70
May	878.20	923.80	765.70	680.10	689.70	449.80	805.20	837.20	606.30
August	873.40	920.20	778.10	685.00	697.00	452.20	809.50	844.40	617.80
<b>TASMANIA</b>									
<b>1999</b>									
May	737.40	771.70	656.30	617.10	629.80	423.90	697.40	725.00	542.40
August	752.40	786.70	674.50	624.30	635.80	422.10	708.20	734.20	544.00
November	757.60	797.90	678.40	637.00	652.90	434.00	715.30	747.10	552.70
<b>2000</b>									
February	762.50	794.10	677.60	635.00	651.70	439.70	717.10	743.30	559.30
May	794.20	829.00	694.30	647.10	664.20	431.10	743.30	772.40	561.10
August	787.00	828.10	692.10	650.60	666.90	424.20	741.20	773.60	554.00
<b>NORTHERN TERRITORY</b>									
<b>1999</b>									
May	800.00	849.80	664.90	686.20	699.50	522.30	753.40	787.20	599.10
August	818.70	873.90	695.20	710.90	726.60	530.40	773.30	811.00	615.70
November	828.80	872.30	703.00	709.00	728.00	521.10	778.90	812.70	617.80
<b>2000</b>									
February	830.50	881.80	714.10	712.30	729.60	533.30	778.00	815.70	622.50
May	856.40	899.10	754.30	732.40	753.00	579.00	805.60	838.20	671.10
August	859.70	901.30	750.40	722.30	741.20	555.60	801.00	832.10	655.30
<b>AUSTRALIAN CAPITAL TERRITORY</b>									
<b>1999</b>									
May	891.90	927.80	792.20	779.80	790.00	570.60	841.70	872.20	680.70
August	891.60	923.60	789.90	786.30	796.50	549.70	851.60	870.20	665.70
November	956.50	978.60	852.80	824.50	836.00	615.20	899.10	916.10	725.10
<b>2000</b>									
February	961.40	984.20	854.50	806.30	815.80	601.10	892.50	909.20	718.80
May	986.00	1 008.20	895.90	830.30	836.80	628.30	912.40	933.30	752.10
August	983.30	1 007.00	885.70	834.70	842.90	634.50	917.20	928.80	748.40

AVERAGE WEEKLY EARNINGS, States and Territories: **Original**

Reference period	MALES.....			FEMALES.....			PERSONS.....		
	Full-time adult ordinary time earnings	Full-time adult total earnings	All males total earnings	Full-time adult ordinary time earnings	Full-time adult total earnings	All females total earnings	Full-time adult ordinary time earnings	Full-time adult total earnings	All employees total earnings
NEW SOUTH WALES									
<b>1999</b>									
May	839.30	900.40	768.20	706.10	720.60	512.00	789.00	832.50	641.40
August	840.50	898.00	771.50	704.50	719.40	499.00	789.90	831.40	635.70
November	860.70	923.30	787.10	709.80	725.90	509.90	804.10	849.20	651.70
<b>2000</b>									
February	873.80	931.10	798.10	717.10	731.70	528.60	814.20	855.30	666.70
May	885.70	939.90	801.40	720.70	739.30	536.50	822.20	862.70	673.00
August	901.30	957.10	819.80	729.20	751.10	547.40	836.60	879.60	689.80
VICTORIA									
<b>1999</b>									
May	783.00	835.00	717.60	666.20	679.80	486.50	740.60	778.60	608.00
August	772.30	821.00	705.70	685.20	700.80	488.40	740.80	777.60	601.60
November	780.80	838.80	726.90	695.40	712.40	488.80	750.10	793.40	610.80
<b>2000</b>									
February	797.80	843.70	732.30	696.70	710.00	492.60	761.30	795.40	616.20
May	799.10	850.10	739.60	706.00	722.60	504.80	765.90	804.70	626.30
August	813.10	861.40	741.80	724.10	740.40	513.80	781.60	818.60	632.30
QUEENSLAND									
<b>1999</b>									
May	753.00	804.80	716.60	626.20	636.70	465.80	705.20	741.50	594.40
August	740.30	786.20	693.90	631.70	642.20	468.00	700.70	733.70	587.00
November	754.30	806.30	686.60	629.80	640.50	456.90	707.30	743.70	574.60
<b>2000</b>									
February	764.30	810.30	697.70	646.20	656.10	473.70	721.00	753.80	592.20
May	769.50	822.30	709.90	650.30	662.30	485.90	725.40	763.00	603.90
August	795.10	848.10	728.50	670.40	682.70	495.30	751.20	789.80	622.10
SOUTH AUSTRALIA									
<b>1999</b>									
May	742.20	796.80	686.30	624.70	648.00	457.30	699.70	742.90	576.10
August	742.70	792.00	669.30	631.20	655.70	451.20	702.00	742.20	560.40
November	745.30	805.60	697.40	638.70	663.40	453.80	705.70	752.70	572.80
<b>2000</b>									
February	768.60	821.20	708.30	645.30	656.80	461.30	723.00	760.30	584.50
May	770.40	831.30	705.00	651.40	677.20	462.60	726.80	774.80	585.90
August	791.60	846.00	724.80	667.70	692.60	484.00	745.50	788.90	603.60

Reference period	MALES.....			FEMALES.....			PERSONS.....		
	Full-time adult ordinary time earnings	Full-time adult total earnings	All males total earnings	Full-time adult ordinary time earnings	Full-time adult total earnings	All females total earnings	Full-time adult ordinary time earnings	Full-time adult total earnings	All employees total earnings
WESTERN AUSTRALIA									
<b>1999</b>									
May	819.10	873.80	728.70	640.80	653.50	415.90	757.80	798.10	573.20
August	832.60	887.00	735.00	637.50	650.10	422.80	761.60	800.80	576.00
November	841.70	896.90	745.10	653.60	664.60	423.50	773.90	813.10	579.30
<b>2000</b>									
February	856.00	906.70	761.00	670.80	680.60	433.00	789.00	824.90	591.70
May	872.20	920.90	765.10	677.80	688.70	446.90	803.00	838.20	605.50
August	878.70	922.70	778.40	687.20	697.70	451.50	811.50	843.70	615.50
TASMANIA									
<b>1999</b>									
May	731.90	771.20	657.80	613.70	625.30	421.00	692.00	722.00	539.60
August	749.70	778.50	660.50	619.10	629.90	420.70	703.60	726.10	537.60
November	761.00	801.60	682.50	641.30	658.90	433.90	719.00	751.50	554.90
<b>2000</b>									
February	767.70	799.30	686.20	639.60	656.70	444.20	723.90	750.60	566.70
May	788.10	828.20	695.80	643.40	659.10	428.00	737.20	768.80	558.10
August	784.20	819.60	677.60	645.40	660.90	422.90	736.50	765.10	547.40
NORTHERN TERRITORY									
<b>1999</b>									
May	797.90	851.70	665.90	682.40	696.80	515.50	749.30	786.50	595.80
August	816.60	874.60	693.40	711.60	728.20	534.10	772.40	813.00	617.50
November	830.30	875.60	705.00	710.30	728.10	519.90	780.40	814.30	615.20
<b>2000</b>									
February	833.50	875.70	713.10	714.20	730.90	538.20	781.80	812.90	626.90
May	854.10	901.20	755.40	728.30	749.90	571.10	801.10	837.40	667.30
August	857.40	902.00	748.30	723.00	742.80	559.50	800.10	834.20	657.30
AUSTRALIAN CAPITAL TERRITORY									
<b>1999</b>									
May	886.50	924.10	782.80	776.30	789.50	563.90	841.40	869.10	672.80
August	899.40	927.00	792.50	783.70	793.80	547.40	851.70	872.10	664.20
November	953.10	979.10	853.30	827.50	838.10	619.10	897.60	916.80	728.30
<b>2000</b>									
February	962.20	984.10	861.50	809.60	817.10	607.30	894.40	909.90	725.90
May	979.80	1 003.70	884.70	826.20	835.80	620.30	911.80	929.40	742.90
August	992.10	1 011.10	889.00	832.20	840.20	632.00	917.30	931.20	746.90

AVERAGE WEEKLY EARNINGS, Quarterly Percentage Change—States and Territories: **Trend**

Reference period	MALES.....			FEMALES.....			PERSONS.....		
	Full-time adult ordinary time earnings	Full-time adult total earnings	All males total earnings	Full-time adult ordinary time earnings	Full-time adult total earnings	All females total earnings	Full-time adult ordinary time earnings	Full-time adult total earnings	All employees total earnings
NEW SOUTH WALES									
<b>2000</b>									
February	1.8	1.5	1.4	0.7	0.9	2.4	1.4	1.2	1.9
May	1.7	1.5	1.4	0.9	1.2	2.4	1.4	1.3	1.9
August	1.4	1.3	1.3	0.9	1.3	2.0	1.2	1.3	1.8
VICTORIA									
<b>2000</b>									
February	1.1	1.1	1.2	1.1	1.1	0.7	1.1	1.1	1.0
May	1.4	1.4	1.6	1.3	1.4	1.8	1.5	1.4	1.8
August	1.5	1.5	1.5	1.7	1.8	2.3	1.7	1.5	1.9
QUEENSLAND									
<b>2000</b>									
February	1.1	1.3	0.6	1.4	1.5	1.6	1.3	1.4	1.2
May	1.8	2.0	1.8	2.0	2.0	2.5	1.9	2.1	2.1
August	2.0	2.3	2.2	2.2	2.1	2.7	2.2	2.4	2.4
SOUTH AUSTRALIA									
<b>2000</b>									
February	1.6	1.7	1.3	1.2	0.9	1.2	1.5	1.4	1.3
May	1.7	1.9	1.3	1.6	1.9	2.0	1.7	1.9	1.7
August	1.5	1.7	1.1	1.9	2.6	2.4	1.7	2.0	1.7
WESTERN AUSTRALIA									
<b>2000</b>									
February	1.6	1.2	1.5	2.0	1.8	1.9	1.7	1.4	1.6
May	1.5	1.1	1.4	1.7	1.6	2.3	1.7	1.3	2.1
August	1.1	0.8	1.2	1.2	1.3	2.2	1.4	1.2	2.1
TASMANIA									
<b>2000</b>									
February	1.7	1.7	1.2	1.0	1.2	0.5	1.5	1.6	1.0
May	1.6	1.6	0.8	0.9	1.0	-0.6	1.5	1.5	0.2
August	1.5	1.6	0.8	0.8	0.8	-1.3	1.4	1.5	-0.2
NORTHERN TERRITORY									
<b>2000</b>									
February	1.4	1.0	2.7	0.8	0.9	2.8	1.2	1.1	2.6
May	1.4	1.1	2.5	0.8	0.9	2.7	1.2	0.9	2.6
August	1.4	1.1	2.1	0.7	0.7	2.0	1.1	0.9	2.1
AUSTRALIAN CAPITAL TERRITORY									
<b>2000</b>									
February	2.7	2.4	3.5	1.3	1.1	3.4	1.9	1.7	3.2
May	1.6	1.5	2.2	1.0	0.8	2.3	1.2	1.1	2.1
August	0.7	0.8	1.2	0.8	0.7	1.2	0.8	0.5	1.2

Reference period	MALES.....			FEMALES.....			PERSONS.....		
	Full-time adult ordinary time earnings	Full-time adult total earnings	All males total earnings	Full-time adult ordinary time earnings	Full-time adult total earnings	All females total earnings	Full-time adult ordinary time earnings	Full-time adult total earnings	All employees total earnings
NEW SOUTH WALES									
<b>2000</b>									
February	1.2	1.3	1.4	0.5	0.4	3.5	0.8	0.8	1.9
May	2.1	1.1	0.6	0.9	1.5	1.1	1.7	1.2	1.2
August	1.0	1.6	2.2	1.2	1.5	2.5	1.1	1.7	2.5
VICTORIA									
<b>2000</b>									
February	2.4	2.1	1.0	0.6	0.5	-1.5	2.1	1.2	0.1
May	-0.1	0.4	2.6	1.1	1.3	4.4	0.3	1.0	3.3
August	2.7	2.2	0.6	3.0	3.1	2.1	2.8	2.2	1.4
QUEENSLAND									
<b>2000</b>									
February	0.5	1.2	1.6	3.3	3.3	3.5	1.7	1.9	2.3
May	0.8	1.0	0.8	0.7	0.8	2.8	0.7	0.8	1.7
August	4.2	4.3	3.9	3.3	3.0	1.9	4.1	4.3	2.9
SOUTH AUSTRALIA									
<b>2000</b>									
February	2.5	2.1	0.4	0.6	-1.1	1.4	2.4	1.3	1.2
May	0.7	1.8	-0.6	1.5	3.7	0.3	0.7	2.1	-0.1
August	2.2	1.8	3.9	2.9	3.0	5.4	2.5	2.3	4.2
WESTERN AUSTRALIA									
<b>2000</b>									
February	2.2	1.6	2.1	0.9	0.8	0.0	1.8	1.5	0.9
May	2.4	1.7	0.7	2.3	2.1	5.4	2.1	1.5	3.3
August	-0.6	-0.4	1.6	0.7	1.1	0.5	0.5	0.8	1.9
TASMANIA									
<b>2000</b>									
February	0.6	-0.5	-0.1	-0.3	-0.2	1.3	0.3	-0.5	1.2
May	4.2	4.4	2.5	1.9	1.9	-2.0	3.7	3.9	0.3
August	-0.9	-0.1	-0.3	0.5	0.4	-1.6	-0.3	0.2	-1.3
NORTHERN TERRITORY									
<b>2000</b>									
February	0.2	1.1	1.6	0.5	0.2	2.3	-0.1	0.4	0.8
May	3.1	2.0	5.6	2.8	3.2	8.6	3.5	2.8	7.8
August	0.4	0.2	-0.5	-1.4	-1.6	-4.0	-0.6	-0.7	-2.4
AUSTRALIAN CAPITAL TERRITORY									
<b>2000</b>									
February	0.5	0.6	0.2	-2.2	-2.4	-2.3	-0.7	-0.8	-0.9
May	2.6	2.4	4.8	3.0	2.6	4.5	2.2	2.7	4.6
August	-0.3	-0.1	-1.1	0.5	0.7	1.0	0.5	-0.5	-0.5

AVERAGE WEEKLY EARNINGS, Quarterly Percentage Change—States and Territories: **Original**

Reference period	MALES.....			FEMALES.....			PERSONS.....		
	Full-time adult ordinary time earnings	Full-time adult total earnings	All males total earnings	Full-time adult ordinary time earnings	Full-time adult total earnings	All females total earnings	Full-time adult ordinary time earnings	Full-time adult total earnings	All employees total earnings
NEW SOUTH WALES									
<b>2000</b>									
February	1.5	0.8	1.4	1.0	0.8	3.7	1.3	0.7	2.3
May	1.4	0.9	0.4	0.5	1.0	1.5	1.0	0.9	0.9
August	1.8	1.8	2.3	1.2	1.6	2.0	1.7	2.0	2.5
VICTORIA									
<b>2000</b>									
February	2.2	0.6	0.7	0.2	-0.3	0.8	1.5	0.3	0.9
May	0.2	0.8	1.0	1.3	1.8	2.5	0.6	1.2	1.6
August	1.8	1.3	0.3	2.6	2.5	1.8	2.1	1.7	1.0
QUEENSLAND									
<b>2000</b>									
February	1.3	0.5	1.6	2.6	2.4	3.7	1.9	1.4	3.1
May	0.7	1.5	1.8	0.6	1.0	2.6	0.6	1.2	2.0
August	3.3	3.1	2.6	3.1	3.1	1.9	3.6	3.5	3.0
SOUTH AUSTRALIA									
<b>2000</b>									
February	3.1	1.9	1.6	1.0	-1.0	1.7	2.5	1.0	2.0
May	0.2	1.2	-0.5	0.9	3.1	0.3	0.5	1.9	0.2
August	2.8	1.8	2.8	2.5	2.3	4.6	2.6	1.8	3.0
WESTERN AUSTRALIA									
<b>2000</b>									
February	1.7	1.1	2.1	2.6	2.4	2.2	2.0	1.5	2.1
May	1.9	1.6	0.5	1.0	1.2	3.2	1.8	1.6	2.3
August	0.7	0.2	1.7	1.4	1.3	1.0	1.1	0.7	1.7
TASMANIA									
<b>2000</b>									
February	0.9	-0.3	0.5	-0.3	-0.3	2.4	0.7	-0.1	2.1
May	2.7	3.6	1.4	0.6	0.4	-3.6	1.8	2.4	-1.5
August	-0.5	-1.0	-2.6	0.3	0.3	-1.2	-0.1	-0.5	-1.9
NORTHERN TERRITORY									
<b>2000</b>									
February	0.4	0.0	1.2	0.5	0.4	3.5	0.2	-0.2	1.9
May	2.5	2.9	5.9	2.0	2.6	6.1	2.5	3.0	6.4
August	0.4	0.1	-0.9	-0.7	-0.9	-2.0	-0.1	-0.4	-1.5
AUSTRALIAN CAPITAL TERRITORY									
<b>2000</b>									
February	0.9	0.5	1.0	-2.2	-2.5	-1.9	-0.4	-0.7	-0.3
May	1.8	2.0	2.7	2.0	2.3	2.1	1.9	2.1	2.3
August	1.3	0.7	0.5	0.7	0.5	1.9	0.6	0.2	0.5

AVERAGE WEEKLY EARNINGS, Annual Percentage Change—States and Territories: **Trend**

Reference period	MALES.....			FEMALES.....			PERSONS.....		
	Full-time adult ordinary time earnings	Full-time adult total earnings	All males total earnings	Full-time adult ordinary time earnings	Full-time adult total earnings	All females total earnings	Full-time adult ordinary time earnings	Full-time adult total earnings	All employees total earnings
<b>NEW SOUTH WALES</b>									
<b>1998</b>									
August	3.6	3.8	3.5	4.2	4.2	1.8	3.9	4.1	2.6
<b>1999</b>									
August	4.7	4.4	4.5	4.2	4.1	2.9	4.5	4.3	3.7
<b>2000</b>									
August	6.4	5.6	5.3	3.0	3.8	8.2	5.1	4.8	7.0
<b>VICTORIA</b>									
<b>1998</b>									
August	4.2	3.4	1.5	4.1	3.2	2.7	3.6	3.3	2.0
<b>1999</b>									
August	0.5	-0.2	1.1	4.8	4.9	2.9	1.8	1.3	0.9
<b>2000</b>									
August	4.7	4.4	4.9	5.7	5.8	5.2	5.2	4.9	5.0
<b>QUEENSLAND</b>									
<b>1998</b>									
August	4.7	4.2	4.9	3.8	3.4	1.9	4.5	4.0	3.3
<b>1999</b>									
August	1.2	0.4	-0.4	1.7	1.2	0.1	1.3	0.6	-0.5
<b>2000</b>									
August	5.4	6.1	3.8	6.4	6.5	7.4	6.0	6.4	5.7
<b>SOUTH AUSTRALIA</b>									
<b>1998</b>									
August	5.3	4.8	3.1	6.8	7.3	9.3	5.3	4.9	5.2
<b>1999</b>									
August	1.2	1.1	2.4	0.6	1.8	-2.1	1.1	1.5	-0.1
<b>2000</b>									
August	6.0	6.5	5.2	5.5	5.8	5.6	5.9	6.2	5.4
<b>WESTERN AUSTRALIA</b>									
<b>1998</b>									
August	5.0	5.2	4.1	4.5	4.7	-2.0	5.4	5.7	1.7
<b>1999</b>									
August	2.3	1.3	-0.7	3.0	2.9	2.7	2.5	1.7	0.7
<b>2000</b>									
August	6.4	4.8	5.7	6.5	6.1	7.3	6.6	5.4	6.8
<b>TASMANIA</b>									
<b>1998</b>									
August	1.9	3.1	2.4	4.9	5.4	2.6	2.9	4.0	2.5
<b>1999</b>									
August	1.8	0.5	0.3	1.6	1.5	3.9	1.5	0.6	1.5
<b>2000</b>									
August	6.1	6.0	3.6	4.0	4.5	-0.1	5.6	5.7	1.9
<b>NORTHERN TERRITORY</b>									
<b>1998</b>									
August	4.9	4.1	2.5	6.0	5.8	7.6	5.3	4.7	4.0
<b>1999</b>									
August	2.1	2.0	-0.9	3.8	4.0	-4.3	2.7	2.7	-1.8
<b>2000</b>									
August	5.8	4.5	10.4	3.0	3.3	8.9	4.9	4.2	9.5
<b>AUSTRALIAN CAPITAL TERRITORY</b>									
<b>1998</b>									
August	6.3	6.2	7.1	4.8	5.1	5.7	5.9	6.0	6.9
<b>1999</b>									
August	-0.1	-0.4	-3.3	2.7	2.7	-6.6	0.9	0.7	-5.9
<b>2000</b>									
August	8.7	7.7	11.0	4.8	4.3	10.6	6.5	5.6	10.0

## EXPLANATORY NOTES

### INTRODUCTION

**1** This publication contains final estimates of average weekly earnings for August 2000 based on information obtained from a sample survey of employers. Preliminary estimates were published in *Average Weekly Earnings, Australia, Preliminary* (Cat. no. 6301.0).

### SCOPE

**2** All wage and salary earners who received pay for the reference period are represented in the Survey of Average Weekly Earnings (AWE), except:

- members of the Australian permanent defence forces;
- employees of enterprises primarily engaged in agriculture, forestry and fishing;
- employees in private households employing staff;
- employees of overseas embassies, consulates, etc;
- employees based outside Australia; and
- employees on workers' compensation who are not paid through the payroll.

**3** Also excluded are the following persons who are not regarded as employees for the purposes of this survey:

- casual employees who did not receive pay during the reference period;
- employees on leave without pay who did not receive pay during the reference period;
- employees on strike, or stood down, who did not receive pay during the reference period;
- directors who are not paid a salary;
- proprietors/partners of unincorporated businesses;
- self-employed persons such as subcontractors, owner/drivers, consultants ; and
- persons paid solely by commission without a retainer.

### SURVEY DESIGN

**4** A sample of approximately 4,700 employer units is selected from the ABS Business Register to ensure adequate State and industry representation. The sample is updated each quarter to reflect changes in the ABS register of businesses. These changes arise from the emergence of new businesses, takeovers and mergers, changes to industry classification, changes in the number of employees, and businesses which have ceased operations. Such updating of the register can contribute to changes in the estimates of average weekly earnings.

**5** The statistical unit for the survey comprises all activities of an employer in a particular State or Territory. Each statistical unit is classified to an industry which reflects the predominant activity of the business in the State or Territory. The statistical units are stratified by State, sector, industry, employment size and an equal probability sample is selected from each stratum.

**6** Since February 1992, survey data for a number of Commonwealth government and Australian Capital Territory government departments have been collected electronically. From November 1993, survey data for a number of Northern Territory government departments and agencies have also been collected electronically.

### SURVEY DESIGN CHANGES

**7** Prior to the August 1996 survey, in a small number of cases where a business had a significant number of employees in more than one industry, a separate statistical unit was created for each industry. This change in procedures had a minimal effect on the average weekly earnings estimates.



## EXPLANATORY NOTES

### SURVEY DESIGN CHANGES

*continued*

**8** For some time now the ABS has been using Australian Taxation Office information on Group Employer (GE) registrations to add new businesses to the ABS Business Register. From May 1999 the ABS began using GE information to delete from the Business Register those businesses which have ceased trading, or which are no longer employing staff. For May 1999 this resulted in a large number of inactive businesses being deleted from the population for the Survey of Average Weekly Earnings. The impact of these deletions on the estimates for May 1999 was negligible and no adjustments were made to previous estimates. Following the introduction of this process, the number of businesses deleted each quarter has been small and this is expected to continue.

**9** Improvements to the survey estimation method were introduced from May 1999. Adjustments are made each quarter to account for the time lag between businesses commencing operation and their inclusion on the ABS Business Register.

### NOTES ON ESTIMATES

**10** Average weekly earnings statistics represent average gross (before tax) earnings of employees and do not relate to average award rates nor to the earnings of the 'average person'. Estimates of average weekly earnings are derived by dividing estimates of weekly total earnings by estimates of number of employees. Changes in the averages may be affected not only by changes in the level of earnings of employees but also by changes in the overall composition of the wage and salary earner segment of the labour force.

**11** There are several aspects which can contribute to compositional changes, including variations over time in the proportions of full-time, part-time, casual and junior employees; variations in the occupational distribution within and across industries; variations in the distribution of employment between industries; and variations in the proportion of male and female employees. Such effects may apply differently within different States and Territories, and over time.

### ROUNDING

**12** Estimates of average weekly earnings are rounded to the nearest 10 cents.

**13** Percentage changes are calculated on the actual values and may differ from calculations based on rounded estimates.

### COMPARABILITY OF RESULTS

**14** It is important to recognise that whilst average employee earnings can be derived from the Survey of Employment and Earnings (SEE) published in *Wage and Salary Earners, Australia* (Cat. no. 6248.0), these average earnings will not be comparable with those produced from the AWE Survey. The SEE collects the sum of employee earnings paid in all pay periods ending in a calendar quarter, including payments to employees which are excluded from the scope of the AWE survey such as retrospective pay, pay in advance, leave loadings and severance, termination and redundancy payments.

**15** Whilst the quarterly earnings produced by the SEE are affected by the varying number of pay periods from quarter to quarter, the AWE results are unaffected because of the selection of a specified pay period in the middle of a quarter. The SEE earnings data are also more subject to seasonal variations, particularly in the December and March quarters, due to the incidence of holidays taken in January being paid in advance and the earnings being reported in December quarter figures.

### HISTORICAL SERIES

**16** The AWE series was introduced in August 1981 when it replaced the average weekly earnings series based principally on information from payroll tax returns. Revised estimates of average weekly earnings for the period August 1981 to November 1983 were included in *Average Weekly Earnings, States and Australia, March Quarter 1984* (Cat. no. 6302.0) published on 12 July 1984. Users who need a measure of the movement in earnings for a period which spans both the payroll tax based and employer survey series should refer to Table 3 in that publication which presents both series linked to a common index base (August 1981 = 100.0).

## EXPLANATORY NOTES

### SEASONAL ADJUSTMENT

**17** Seasonal adjustment is a means of removing the estimated effects of normal seasonal variation from the series so that the effects of other influences on the series can be more clearly recognised. Seasonal adjustment does not aim to remove the irregular or non-seasonal influences which may be present in any particular week. Influences that are volatile or unsystematic can still make it difficult to interpret the movement of the series even after adjustment for seasonal variation. This means that quarter-to-quarter movements of seasonally adjusted estimates may not be reliable indicators of trend behaviour.

**18** The series have been seasonally adjusted from September 1983 and these historical series can be made available on request. The seasonal factors are reviewed annually to take account of each additional year's original data. The review takes place in time for the results to be incorporated in each February issue of this publication.

**19** Details about the method of seasonal adjustment of these series are available on request.

### TREND ESTIMATES

**20** The ABS considers that trend estimates provide a more reliable guide to the underlying direction of the data, and are more suitable than either the seasonally adjusted or original estimates for most business decisions and policy advice.

**21** The trend estimates in this publication, obtained by dampening out the irregular component from the seasonally adjusted series, are calculated using a centred 7-term Henderson moving average of the seasonally adjusted series. Estimates for the three most recent quarters cannot be calculated using this centred average method; instead an asymmetric average is used. This can lead to revisions in the trend estimates for the last three quarters when data become available for later quarters. Revisions of trend estimates will also occur with revisions to the original data and re-estimation of seasonal adjustment factors.

**22** If a series is highly volatile then the trend estimates will be subject to greater revision for the latest few quarters as new data become available. However, it is important to note that this does not make the trend series inferior to the seasonally adjusted or original series. In some cases the effect of the irregular component on overall movements will remain in the seasonally adjusted and the original estimates but not in the trend series.

**23** For more information, see *A Guide to Interpreting Time Series – Monitoring 'Trends': an Overview* (Cat. no. 1348.0) or contact the Assistant Director, Time Series Analysis on Canberra 02 6252 6345.

**24** Three feature articles which have appeared in the ABS monthly publication *Australian Economic Indicators* (Cat. no. 1350.0) may also be of interest:

- Picking Turning Points in the Economy (April 1991)
- Smarter Data Use (March 1992); and
- Direct Movement Estimator for the Survey of Average Weekly Earnings (August 1998)

### FURTHER INFORMATION

**25** Background information about the average weekly earnings series is provided in *Information Paper: New Statistical Series: Employment, Average Weekly Earnings, Job Vacancies and Overtime* (Cat. no. 6256.0) published 21 June 1984. Copies are available on request.

## EXPLANATORY NOTES

### RELATED PUBLICATIONS

**26** The following publications contain related information and are available from ABS Bookshops:

- *Average Weekly Earnings, Preliminary* (Cat. no. 6301.0)—issued quarterly
- *Average Weekly Earnings, Australia 1941–1990* (Cat. no. 6350.0)
- *Employee Earnings and Hours, Australia* (Cat. no. 6306.0)—issued biennially
- *Wage Cost Index, Australia* (Cat. no. 6345.0)—issued quarterly
- *Job Vacancies, Australia* (Cat. no. 6354.0)—issued quarterly
- *Information Paper: New Statistical Series: Employment, Average Weekly Earnings, Job Vacancies and Overtime* (Cat. no. 6256.0)
- *Occasional Paper No 1986/1: Statistics on Wages, Earnings, Income and Labour Costs – A Guide to Their Concepts, Measurement and Usage*
- *Wage and Salary Earners, Australia* (Cat. no. 6248.0)—issued quarterly
- *Labour Force, Australia* (Cat. no. 6203.0)—issued monthly
- *Labour Force Projections, Australia 1992–2005* (Cat. no. 6260.0)
- *Employee Earnings, Benefits and Trade Union Membership* (Cat. no. 6310.0)—issued annually

**27** Current publications produced by the ABS are listed in the *Catalogue of Publications and Products, Australia* (Cat. no. 1101.0). The ABS also issues, on Tuesdays and Fridays, a *Release Advice* (Cat. no. 1105.0) which lists publications to be released in the next few days. The catalogue and release advice are available from any ABS office.

### UNPUBLISHED STATISTICS

**28** In some cases, the ABS can also make available information which is not published. This information may be made available in one or more of the following forms: hardcopy, data tape, floppy disk and Internet Email. Generally, a charge is made for providing unpublished information. Details of additional data available are shown in Special Data Service on page 32 of this publication.

## TECHNICAL NOTES

### RELIABILITY OF ESTIMATES

**1** As the estimates in this publication are based on information relating to a sample of employers, they are subject to sampling variability. That is, they may differ from the estimates that would have been produced if the information had been obtained from all employers. This difference, called *sampling error*, should not be confused with inaccuracy that may occur because of imperfections in reporting by respondents or in processing by the ABS. Such inaccuracy is referred to as *non-sampling error* and may occur in any enumeration whether it be a full count or a sample. Efforts have been made to reduce non-sampling error by careful design of questionnaires, detailed checking of returns and quality control of processing.

**2** The sampling error associated with any estimate can be estimated from the sample results. One measure of sampling error is given by the *standard error* which indicates the degree to which an estimate may vary from the value which would have been obtained from a full enumeration (the 'true value'). There are about two chances in three that a sample estimate differs from the true value by less than one standard error, and about nineteen chances in twenty that the difference will be less than two standard errors.

**3** An example of the use of a standard error is as follows. If the estimated average earnings was \$500.00 with a standard error of \$4.00, then there would be about two chances in three that a full enumeration would have given an estimate in the range \$496.00 to \$504.00 and about nineteen chances in twenty that it would be in the range \$492.00 to \$508.00.

**4** An example of the use of a standard error for a quarterly change estimate is as follows. If the estimate of quarterly change between two quarters was \$1.50 and the standard error on this estimate was \$1.00, then there would be about two chances in three that a full enumeration would have given a quarterly change estimate in the range +\$0.50 to +\$2.50 and about nineteen chances in twenty that it would be in the range -\$0.50 to +\$3.50.

**5** Quarterly movements in estimates of average weekly earnings are considered to be statistically significant where they exceed two standard errors.



AVERAGE WEEKLY EARNINGS, Standard Errors—States

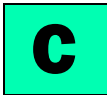
States and Territories	MALES.....			FEMALES.....			PERSONS.....		
	<i>Full-time adult ordinary time earnings</i>	<i>Full-time adult total earnings</i>	<i>All males total earnings</i>	<i>Full-time adult ordinary time earnings</i>	<i>Full-time adult total earnings</i>	<i>All females total earnings</i>	<i>Full-time adult ordinary time earnings</i>	<i>Full-time adult total earnings</i>	<i>All employees total earnings</i>
LEVEL (\$)									
New South Wales	15.00	15.00	15.40	10.60	9.30	9.60	11.40	11.10	10.60
Victoria	13.60	13.60	12.00	10.30	10.40	10.90	10.40	10.20	9.60
Queensland	15.80	16.20	16.60	9.40	9.50	9.60	11.70	12.40	12.00
South Australia	17.50	19.80	17.60	16.70	9.60	13.70	15.00	13.40	12.90
Western Australia	24.20	24.40	26.40	10.70	10.80	16.00	18.50	19.00	20.00
Tasmania	15.50	16.40	19.20	15.20	16.50	19.00	13.10	13.70	17.40
Northern Territory	12.90	13.60	19.40	6.40	7.10	12.00	8.00	8.50	13.20
Australian Capital Territory	21.60	21.70	19.20	14.50	14.50	20.10	13.20	13.20	17.10
<b>Australia</b>	<b>7.50</b>	<b>7.50</b>	<b>7.40</b>	<b>5.20</b>	<b>4.70</b>	<b>5.10</b>	<b>5.70</b>	<b>5.60</b>	<b>5.40</b>

QUARTERLY MOVEMENT (\$)									
New South Wales	9.80	9.40	10.60	8.70	7.60	7.60	7.70	7.00	7.00
Victoria	9.00	9.60	9.10	6.50	6.60	7.20	6.60	6.90	7.40
Queensland	9.90	10.70	10.10	9.00	9.30	7.50	8.20	8.90	7.90
South Australia	11.90	15.90	13.40	10.40	8.30	7.60	8.70	10.50	7.90
Western Australia	11.30	12.40	12.60	9.00	9.20	7.60	9.70	10.40	8.70
Tasmania	15.70	16.40	18.10	7.30	7.60	9.40	11.40	12.00	9.90
Northern Territory	11.20	10.10	14.50	7.50	7.00	10.00	8.00	7.20	10.80
Australian Capital Territory	18.40	17.60	19.10	18.50	18.30	16.80	16.30	15.80	16.50
<b>Australia</b>	<b>4.90</b>	<b>5.00</b>	<b>5.00</b>	<b>4.20</b>	<b>3.90</b>	<b>3.60</b>	<b>3.80</b>	<b>3.70</b>	<b>3.50</b>



AVERAGE WEEKLY EARNINGS, Standard Errors—Sectors

Sector	MALES.....			FEMALES.....			PERSONS.....		
	<i>Full-time adult ordinary time earnings</i>	<i>Full-time adult total earnings</i>	<i>All males total earnings</i>	<i>Full-time adult ordinary time earnings</i>	<i>Full-time adult total earnings</i>	<i>All females total earnings</i>	<i>Full-time adult ordinary time earnings</i>	<i>Full-time adult total earnings</i>	<i>All employees total earnings</i>
LEVEL (\$)									
Private sector	9.20	9.30	8.80	6.70	6.30	6.30	7.20	7.20	6.60
Public sector	5.50	5.20	5.20	1.90	1.90	3.50	3.30	3.20	3.90
<b>All sectors</b>	<b>7.50</b>	<b>7.50</b>	<b>7.40</b>	<b>5.20</b>	<b>4.70</b>	<b>5.10</b>	<b>5.70</b>	<b>5.60</b>	<b>5.40</b>
QUARTERLY MOVEMENT (\$)									
Private sector	6.00	6.10	6.00	5.70	5.20	4.50	4.90	4.80	4.40
Public sector	3.10	3.00	3.70	1.30	1.40	3.40	2.00	1.90	3.40
<b>All sectors</b>	<b>4.90</b>	<b>5.00</b>	<b>5.00</b>	<b>4.20</b>	<b>3.90</b>	<b>3.60</b>	<b>3.80</b>	<b>3.70</b>	<b>3.50</b>



AVERAGE WEEKLY EARNINGS, Standard Errors—Industry

Industry	MALES.....			FEMALES.....			PERSONS.....		
	<i>Full-time adult ordinary time earnings</i>	<i>Full-time adult total earnings</i>	<i>All males total earnings</i>	<i>Full-time adult ordinary time earnings</i>	<i>Full-time adult total earnings</i>	<i>All females total earnings</i>	<i>Full-time adult ordinary time earnings</i>	<i>Full-time adult total earnings</i>	<i>All employees total earnings</i>
LEVEL (\$)									
Mining	31.90	29.70	29.80	35.40	35.10	40.20	29.80	27.90	27.80
Manufacturing	13.10	13.50	13.20	15.00	15.40	16.30	11.60	11.90	12.00
Electricity, gas & water supply	9.40	10.60	10.30	6.80	7.00	6.90	8.20	9.20	8.60
Construction	24.20	28.10	26.50	41.40	42.30	31.10	26.40	30.40	26.30
Wholesale trade	31.80	30.60	29.20	19.30	19.80	19.10	26.10	25.50	24.20
Retail trade	14.10	17.90	15.50	12.90	14.10	10.70	12.20	14.20	12.10
Accommodation, cafes & restaurants	17.70	20.30	18.10	22.00	21.90	14.70	16.50	18.30	15.30
Transport & storage	24.20	28.00	25.90	32.30	36.00	23.10	21.80	25.50	22.70
Communication services	44.30	42.90	41.70	17.40	17.10	18.80	36.00	34.80	34.70
Finance & insurance	31.90	26.30	27.70	27.30	11.10	27.50	33.00	20.20	28.00
Property & business services	34.00	32.40	33.60	21.30	18.90	18.10	26.40	24.40	22.70
Government administration & defence	12.90	12.50	12.50	6.50	6.40	8.10	9.20	8.80	9.60
Education	6.80	6.90	9.50	3.80	3.80	9.30	4.60	4.60	8.90
Health & community services	39.90	40.40	31.00	10.00	10.10	11.50	15.40	15.70	13.00
Cultural and recreational services	44.60	43.80	61.50	25.10	24.70	26.50	32.50	31.40	33.20
Personal & other services	27.30	27.00	24.60	23.20	24.00	16.40	19.30	19.50	18.60
<b>All industries</b>	<b>7.50</b>	<b>7.50</b>	<b>7.40</b>	<b>5.20</b>	<b>4.70</b>	<b>5.10</b>	<b>5.70</b>	<b>5.60</b>	<b>5.40</b>

QUARTERLY MOVEMENT (\$)									
Mining	21.30	23.10	22.30	29.30	29.30	31.20	19.80	21.80	21.10
Manufacturing	10.50	11.30	11.70	11.50	12.10	13.60	9.50	10.00	10.50
Electricity, gas & water supply	9.30	9.50	9.50	8.80	8.60	9.60	8.20	8.30	8.20
Construction	16.10	21.70	22.50	30.30	30.80	31.90	16.10	21.00	21.30
Wholesale trade	15.60	15.00	16.40	11.70	11.70	10.70	12.70	12.50	12.90
Retail trade	8.60	9.50	8.10	7.60	8.00	6.40	6.80	7.20	6.20
Accommodation, cafes & restaurants	12.70	12.80	10.60	13.20	14.60	8.80	11.20	11.40	7.90
Transport & storage	11.90	11.40	18.40	14.20	12.90	17.90	11.20	10.10	17.50
Communication services	9.00	6.90	9.50	8.80	9.00	7.80	10.30	8.90	9.50
Finance & insurance	32.40	27.70	29.40	19.90	10.70	12.60	23.20	16.30	17.00
Property & business services	24.10	23.00	23.90	13.50	13.20	11.20	15.90	15.20	13.90
Government administration & defence	7.30	6.90	7.30	4.70	5.10	5.90	5.50	5.30	5.80
Education	6.30	6.40	8.20	3.50	3.50	6.70	3.60	3.60	6.20
Health & community services	31.50	31.80	26.60	13.90	14.10	10.90	14.80	15.00	11.50
Cultural and recreational services	29.40	29.80	26.90	15.50	15.40	10.80	22.20	22.40	14.80
Personal & other services	15.20	17.00	14.90	29.10	30.40	18.30	18.80	20.40	16.80
<b>All industries</b>	<b>4.90</b>	<b>5.00</b>	<b>5.00</b>	<b>4.20</b>	<b>3.90</b>	<b>3.60</b>	<b>3.80</b>	<b>3.70</b>	<b>3.50</b>

## SPECIAL DATA SERVICE

### INTRODUCTION

A large range of unpublished data are available from the Survey of Average Weekly Earnings on request. These data can be produced for clients as customised reports. The variables are listed below.

### HOW TO PLACE AN ORDER

Firstly, determine the variables (see following) that you require estimates for. A covering letter indicating these requirements and the intended uses of the data requested should be addressed to:

Labour Statistics Centre  
Australian Bureau of Statistics  
GPO Box K881  
PERTH WA 6842

### CONTACT OFFICER

If you wish to discuss individual requests, especially in regard to reliability of estimates for particular cross-classifications and the charges involved, please telephone Glynis Orrell on Perth 08 9360 5304.

### VARIABLES

The following variables are available from this survey.

Note: The more variables included in any one tabulation the more likely it is that confidentiality provisions associated with the data will be invoked and some data suppressed.

Type of estimate	Original Seasonally adjusted Trend
Composition of earnings	Full-time adult ordinary time earnings Full-time adult total earnings All employees total earnings
States and Territories	New South Wales Victoria Queensland South Australia Western Australia Tasmania Northern Territory Australian Capital Territory
Sector	Private sector Public sector
Sex	Males Females Persons
Industry (ANZSIC classification)	ANZSIC Division (1-digit code) —as shown in table 10 ANZSIC Sub-division (2-digit code) ANZSIC Group (3-digit code) ANZSIC Class (4-digit code)



## G L O S S A R Y

<b>Adult employees</b>	Adult employees are those employees 21 years of age or over and those employees who, although under 21 years of age, are paid at the full adult rate for their occupation.
<b>Average Weekly Earnings</b>	Average Weekly Earnings statistics represent average gross (before tax) earnings of employees and do not relate to average award rates nor to the earnings of the 'average person'. Estimates of average weekly earnings are derived by dividing estimates of weekly total earnings by estimates of number of employees.
<b>Employees</b>	Employees refer to all wage and salary earners (as defined in paragraphs 2 and 3 of the Explanatory Notes) who received pay for any part of the reference period.
<b>Full-time employees</b>	Full-time employees are permanent, temporary and casual employees who normally work the agreed or award hours for a full-time employee in their occupation and received pay for any part of the reference period. If agreed or award hours do not apply, employees are regarded as full-time if they ordinarily work 35 hours or more per week.
<b>Reference period</b>	Reference period for the survey refers to the last pay period ending on or before the third Friday of the middle month of the quarter. Where a pay period is fortnightly or monthly, etc., the employer is requested to report only one week's proportion. The reference date for the current survey is 18 August 2000.
<b>Sector</b>	Public sector includes all local government authorities and government departments, agencies and authorities created by, or reporting to the Commonwealth and State Parliaments. All remaining employees are classified as private sector.
<b>Weekly ordinary time earnings</b>	Weekly ordinary time earnings refers to one week's earnings of employees for the reference period attributable to award, standard or agreed hours of work. It is calculated before taxation and any other deductions (e.g. superannuation, board and lodging) have been made. Included in ordinary time earnings are award, workplace and enterprise bargaining payments, and other agreed base rates of pay, over award and overagreed payments, penalty payments, shift and other allowances; commissions and retainers; bonuses and similar payments related to the reference period; payments under incentive or piecework; payments under profit sharing schemes normally paid each pay period; payment for leave taken during the reference period; all workers' compensation payments made through the payroll; and salary payments made to directors. Excluded are overtime payments, retrospective pay, pay in advance, leave loadings, severance, termination and redundancy payments, and other payments not related to the reference period.
<b>Weekly total earnings</b>	Weekly total earnings of employees is equal to weekly ordinary time earnings plus weekly overtime earnings.





## FOR MORE INFORMATION...

- INTERNET* **www.abs.gov.au** the ABS web site is the best place to start for access to summary data from our latest publications, information about the ABS, advice about upcoming releases, our catalogue, and Australia Now—a statistical profile.
- LIBRARY* A range of ABS publications is available from public and tertiary libraries Australia-wide. Contact your nearest library to determine whether it has the ABS statistics you require, or visit our web site for a list of libraries.
- CPI INFOLINE* For current and historical Consumer Price Index data, call 1902 981 074 (call cost 77c per minute).
- DIAL-A-STATISTIC* For the latest figures for National Accounts, Balance of Payments, Labour Force, Average Weekly Earnings, Estimated Resident Population and the Consumer Price Index call 1900 986 400 (call cost 77c per minute).

## INFORMATION SERVICE

Data which have been published and can be provided within five minutes are free of charge. Our information consultants can also help you to access the full range of ABS information—ABS user-pays services can be tailored to your needs, time frame and budget. Publications may be purchased. Specialists are on hand to help you with analytical or methodological advice.

- PHONE* **1300 135 070**
- EMAIL* **client.services@abs.gov.au**
- FAX* 1300 135 211
- POST* Client Services, ABS, GPO Box 796, Sydney 1041

## WHY NOT SUBSCRIBE?

ABS subscription services provide regular, convenient and prompt deliveries of ABS publications and products as they are released. Email delivery of monthly and quarterly publications is available.

- PHONE* 1300 366 323
- EMAIL* subscriptions@abs.gov.au
- FAX* 03 9615 7848
- POST* Subscription Services, ABS, GPO Box 2796Y, Melbourne 3001



2630200008001  
ISSN 1301-0592

RRP \$19.50

© Commonwealth of Australia 2000